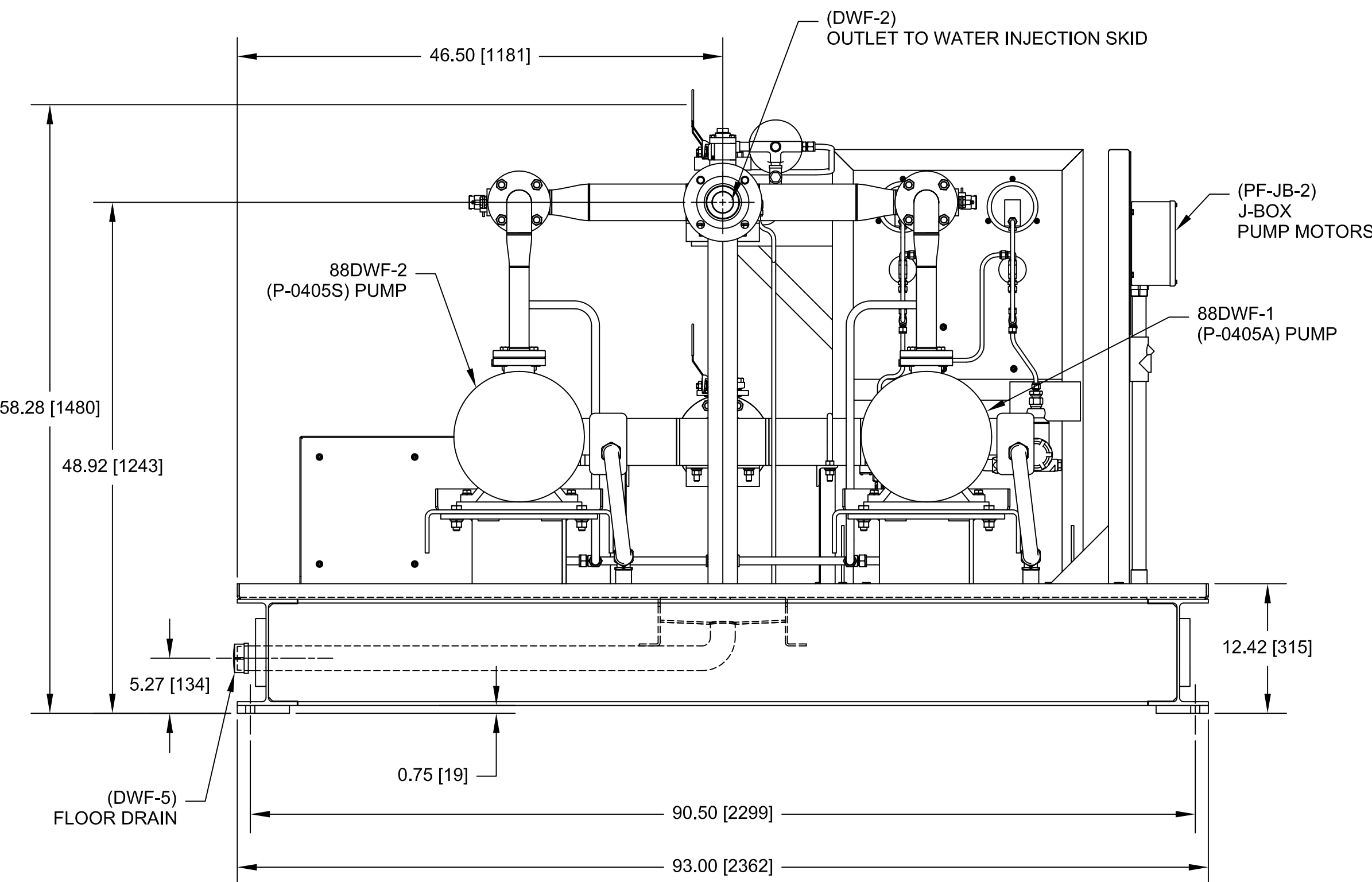
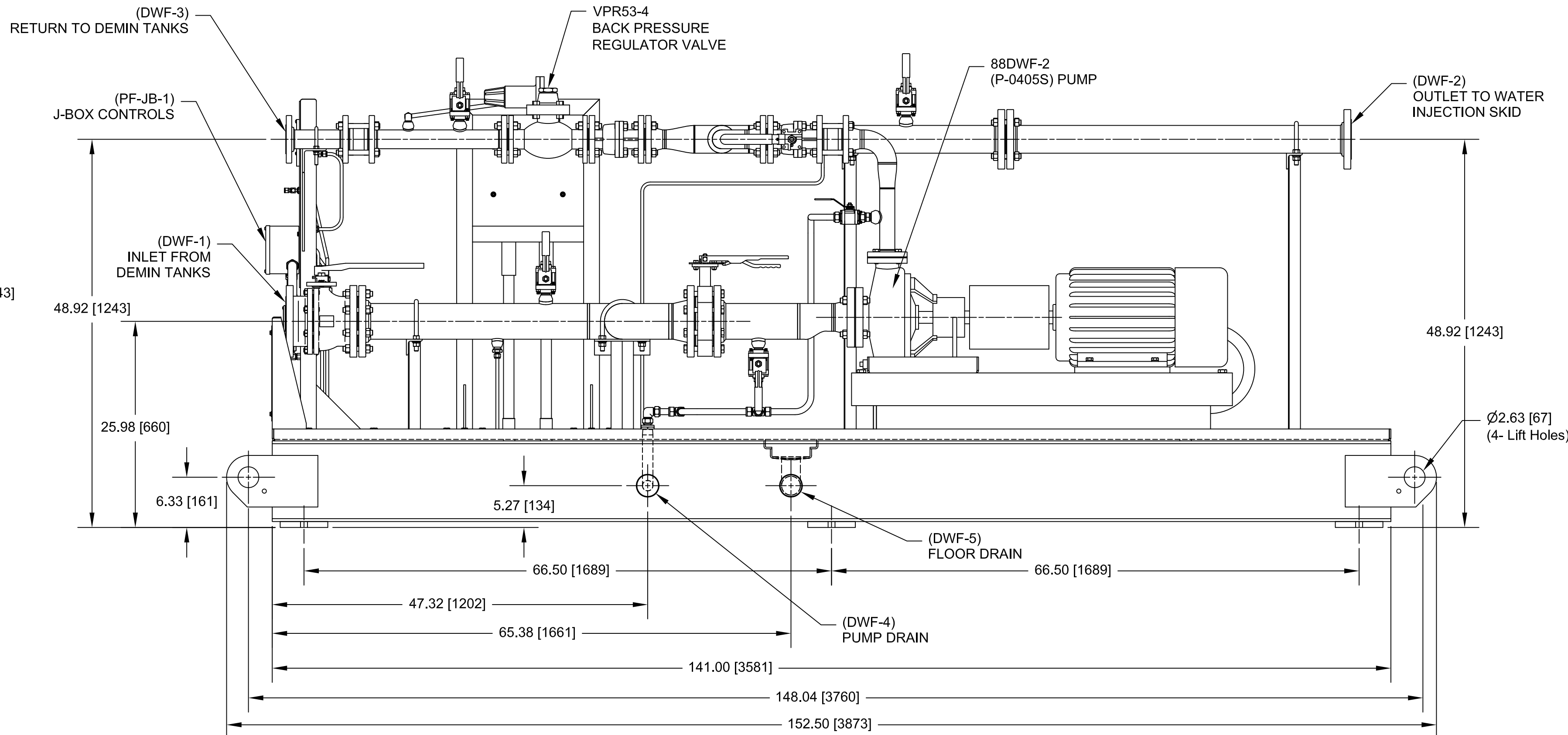
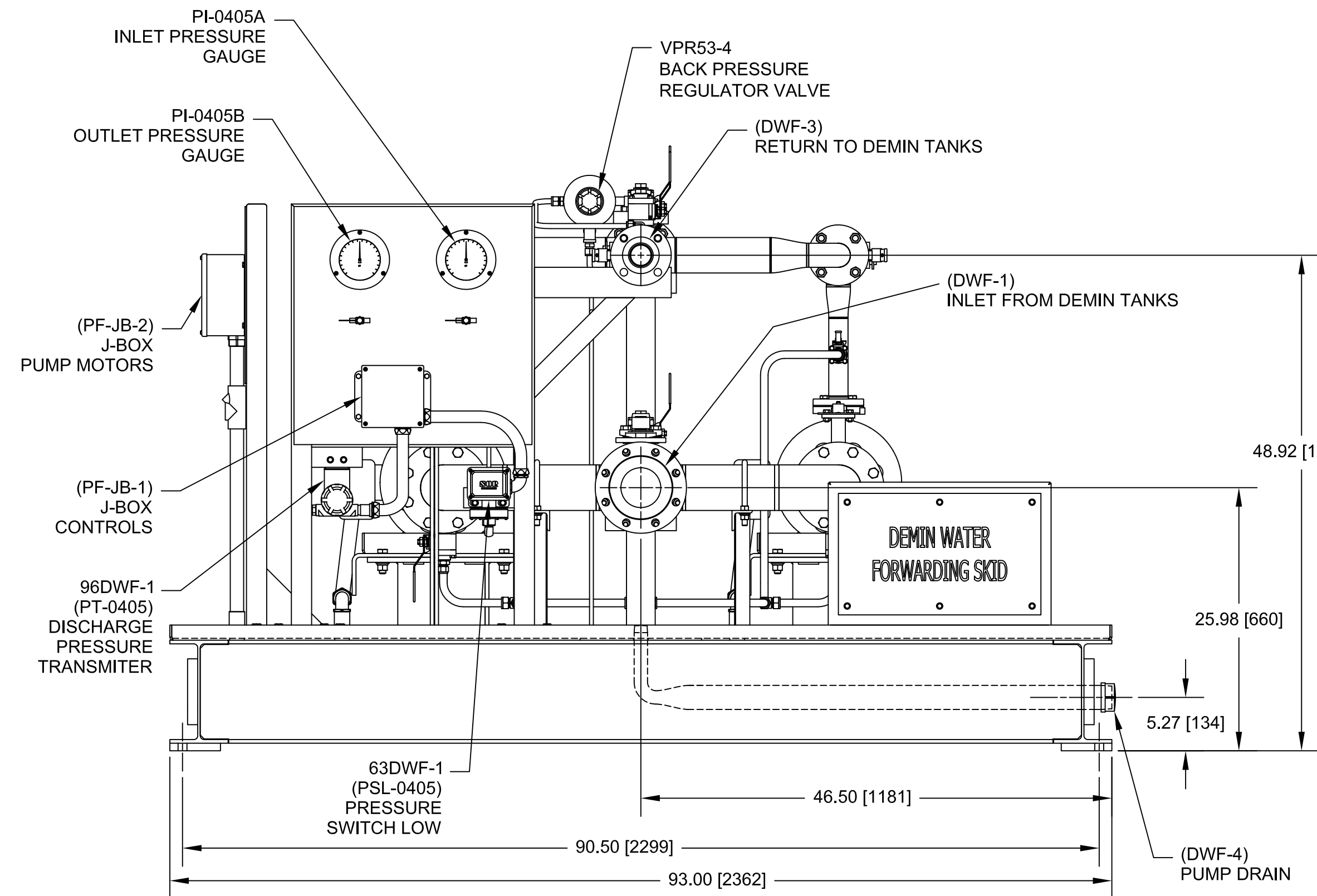
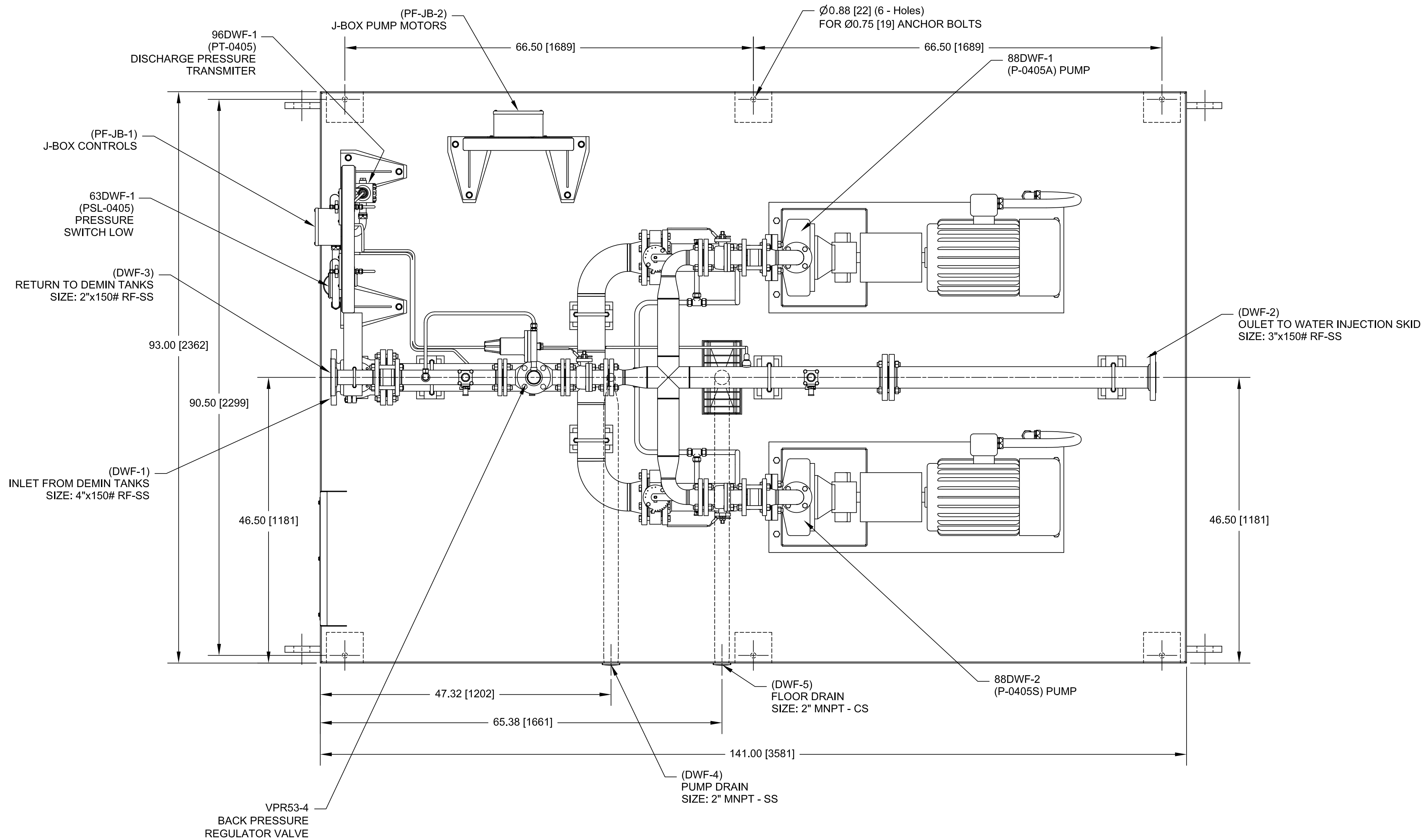


- NOTES:
- DO NOT PAINT INTERNALLY OR EXTERNALLY THREADED PARTS OR PARTS WITH FINISHED SURFACES THAT HAVE BEEN MACHINED FOR TIGHT TOLERANCE FITUP.
 - PAINT FINISH:
BLAST SSPC-SP10 NACE 2.2 mil
2-COATS PHENICON HS (LIGHT GRAY)
PART-A (920A175)
PART-B (700-C-685)
H&C SHARK GRIP ADDITIVE (SLIP RESISTANT ADDITIVE) ON WALKING SURFACES.
 - CHECK FOR RESIDUAL STRESS AT THE PUMP PRIOR TO RELEASE AND OPERATION.
 - PRIOR TO OPERATION, THE FOLLOWING INSPECTIONS & TASKS SHOULD BE PERFORMED:
-ALIGNMENT OF THE MOTOR & PUMP.
-LUBRICATION OF THE MOTOR & PUMP.
-CALIBRATION OF THE INSTRUMENTS & GAUGES.
-VISUAL INSPECTION OF THE STAINER BASKETS.
 - SKID WEIGHT = 6200 lbs [2812kg]
 - ANCHOR SIZE = Ø0.75 [19]
 - REFER TO DRAWING _____ FOR FOUNDATION DETAILS
 - REFER TO AGM-02-0204-PLA-G-0061 FOR INTERCONNECTIONS
 - REFER TO AGM-02-0204-PLA-I-0046 (DEVICE SUMMARY) MLI 0414 FOR INSTRUMENT SET POINTS

REV.	FECHA	REVISIONES O MODIFICACIONES	DIBUJO	REVISO	APROBO
1	29/08/11	ISSUED FOR CONSTRUCTION	SAB	CB	TK
2	13/07/11	ISSUED FOR REVIEW	SAB	CB	TK
3	02/04/11	ISSUED FOR REVIEW	SAB	CB	TK





Nº DE DOCUMENTO	DESCRIPCIÓN	REV.	FECHA
AGM-02-0204-PLA-I-0046	DEVICE SUMMARY		
AGM-02-0204-PLA-P-0009	PROCESS FLOW DIAGRAM		
AGM-02-0204-PLA-G-0061	INTERCONNECTION POINTS		
AGM-02-0204-PLA-F-0047	DEMIN WATER FORWARDING INJECTION SYSTEM PAID (SHT 1 & 2)		
AGM-02-0204-PLA-G-0007	PILOT PLAN (SHT 3)		
REF. FABRICANTE	FABRICANTE	O/C	



- NOTES:
- DO NOT PAINT INTERNALLY OR EXTERNALLY THREADED PARTS OR PARTS WITH FINISHED SURFACES THAT HAVE BEEN MACHINED FOR TIGHT TOLERANCE FITUP.
 - PAINT FINISH:
BLAST SSPC-SP10NACE 2,2 mil
2-COATS PHENICON HS (LIGHT GRAY)
PART-A (920A175)
PART-B (700-C-685)
H&C SHARK GRIP ADDITIVE (SLIP RESISTANT ADDITIVE) ON WALKING SURFACES.
 - CHECK FOR RESIDUAL STRESS AT THE PUMP PRIOR TO RELEASE AND OPERATION.
 - PRIOR TO OPERATION, THE FOLLOWING INSPECTIONS & TASKS SHOULD BE PERFORMED. -ALIGNMENT OF THE MOTOR & PUMP.
-LUBRICATION OF THE MOTOR & PUMP.
-CALIBRATION OF THE INSTRUMENTS & GAUGES.
-VISUAL INSPECTION OF THE STARINER BASKETS.
 - SKID WEIGHT = 6200 lbs [2812kg]
 - ANCHOR SIZE = Ø0.75 [19]
 - REFER TO DRAWING ----- FOR FOUNDATION DETAILS
 - REFER TO AGM-02-0204-PLA-G-0061 FOR INTERCONNECTIONS
 - REFER TO AGM-02-0204-PLA-I-0046 (DEVICE SUMMARY) MLI 0414 FOR INSTRUMENT SET POINTS

REV.	FECHA	REVISIONES O MODIFICACIONES	DIBUJO	REVISO	APROBO
1	29/08/11	ISSUED FOR CONSTRUCTION	SAB	CB	TK
2	13/07/11	ISSUED FOR REVIEW	SAB	CB	TK
3	02/04/11	ISSUED FOR REVIEW	SAB	CB	TK

REF. FABRICANTE	FABRICANTE	O/C
REF. FABRICANTE	FABRICANTE	O/C

AGM-02-0204-PLA-I-0046	DEVICE SUMMARY																																															
AGM-02-0204-PLA-P-0009	PROCESS FLOW DIAGRAM																																															
AGM-02-0204-PLA-G-0061	INTERCONNECTION POINTS																																															
AGM-02-0204-PLA-F-0047	DEMIN WATER FORWARDING INJECTION SYSTEM PAID (SHT 1 & 2)																																															
AGM-02-0204-PLA-G-0007	PLOT PLAN (SHT 3)																																															
Nº DE DOCUMENTO	DESCRIPCIÓN	REV.	FECHA																																													
DOCUMENTOS DE REFERENCIA																																																
<div><div></div><div></div></div> <p>AMPLIACIÓN DE LA CAPACIDAD DE GENERACIÓN Y TRANSPORTE DE ELECTRICIDAD EN LA ISLA DE MARGARITA</p> <p>DEMIN WATER FORWARDING SKID</p> <p>DUAL FUEL MOD. UNITS 298034 & 298035 (GENERAL ARRANGEMENT P-0405A/S)</p> <table><tr><td>PLANO N°:</td><td>REV:</td><td>PROYECTO:</td><td>ESCALA:</td><td>PLANO N°:</td></tr><tr><td>450-2980-1</td><td></td><td></td><td>1:10</td><td>AGM-02-0204-PLA-M-0038</td></tr><tr><td>CALCULO:</td><td>CALCULO:</td><td>FECHA:</td><td>29/08/11</td><td></td></tr><tr><td>REVISADO: C. Brown</td><td>REVISADO: J. Castillo</td><td>ESQA. N°:</td><td></td><td></td></tr><tr><td>DIBUJO: S. Bourdick</td><td>DIBUJO:</td><td>ESC./NOTES:</td><td></td><td></td></tr><tr><td>APROBADO: T. Koontz</td><td>APROBADO: M. Monticelli</td><td>ARCHIVO:</td><td></td><td></td></tr><tr><td>ARCHIVO:</td><td></td><td></td><td></td><td></td></tr><tr><td colspan="2">2</td><td colspan="2">DE</td><td>2</td></tr><tr><td colspan="2">REV</td><td colspan="2">FECHA</td><td>0</td></tr></table>				PLANO N°:	REV:	PROYECTO:	ESCALA:	PLANO N°:	450-2980-1			1:10	AGM-02-0204-PLA-M-0038	CALCULO:	CALCULO:	FECHA:	29/08/11		REVISADO: C. Brown	REVISADO: J. Castillo	ESQA. N°:			DIBUJO: S. Bourdick	DIBUJO:	ESC./NOTES:			APROBADO: T. Koontz	APROBADO: M. Monticelli	ARCHIVO:			ARCHIVO:					2		DE		2	REV		FECHA		0
PLANO N°:	REV:	PROYECTO:	ESCALA:	PLANO N°:																																												
450-2980-1			1:10	AGM-02-0204-PLA-M-0038																																												
CALCULO:	CALCULO:	FECHA:	29/08/11																																													
REVISADO: C. Brown	REVISADO: J. Castillo	ESQA. N°:																																														
DIBUJO: S. Bourdick	DIBUJO:	ESC./NOTES:																																														
APROBADO: T. Koontz	APROBADO: M. Monticelli	ARCHIVO:																																														
ARCHIVO:																																																
2		DE		2																																												
REV		FECHA		0																																												